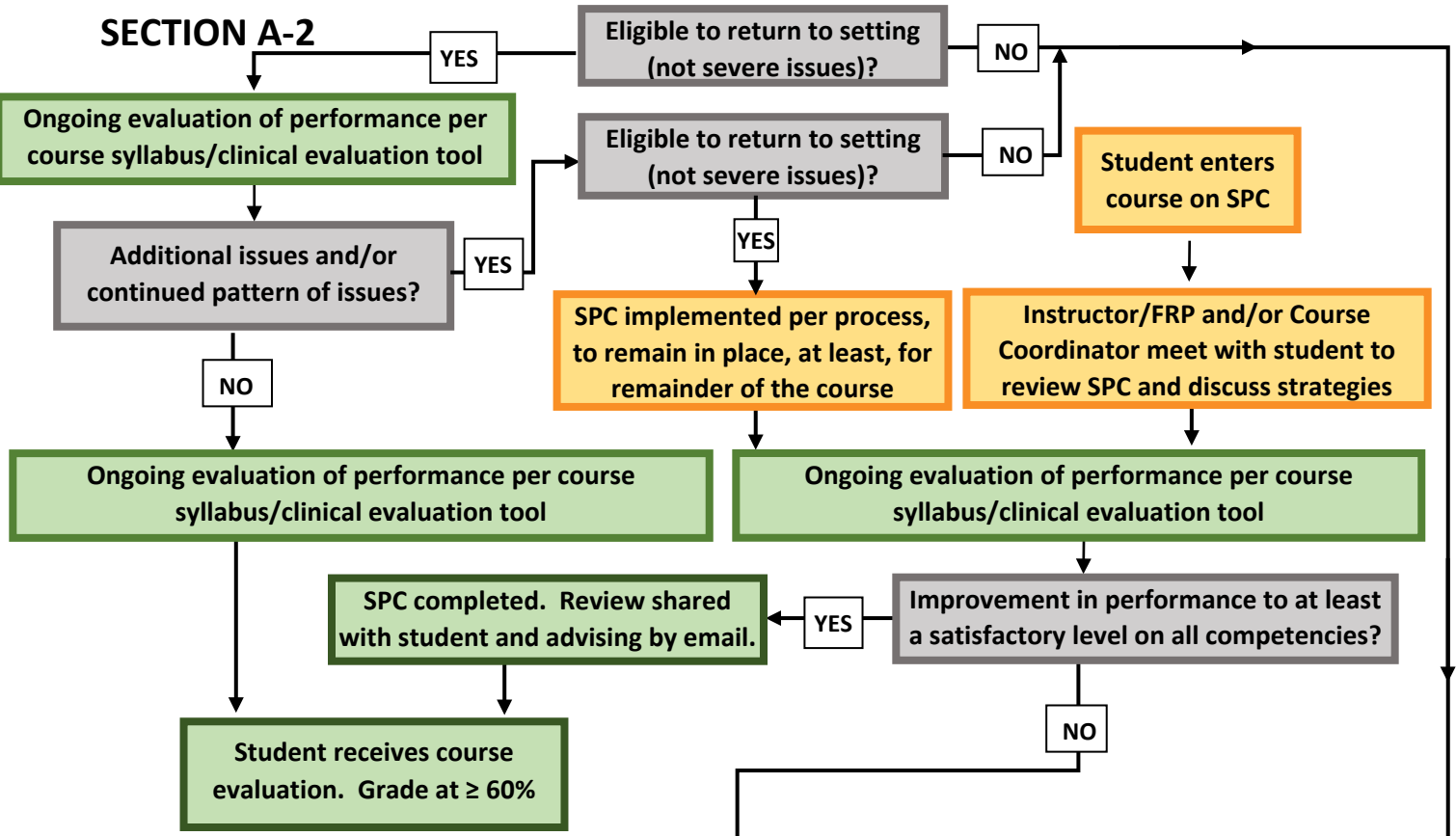


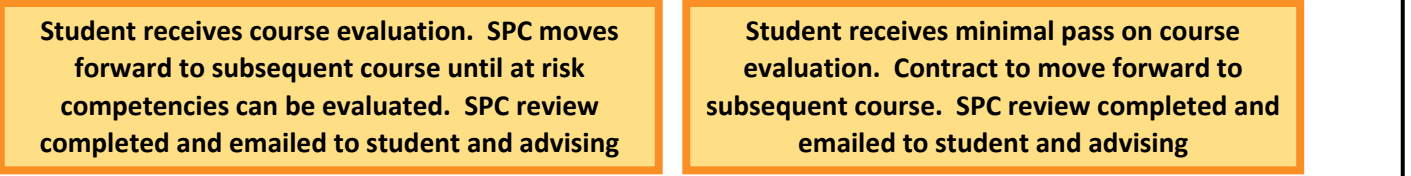
Unsafe performance issue identified per [Process Related to Students who Demonstrate Unsafe Practice](#). Discuss performance issues with the student and follow-up with email summary. Student must reply to email.

SECTION A-1

SECTION A-2



SECTION A-3



SECTION B

Student receives failing grade on course or withdraws in lieu of failure. SPC implemented (if not already in place); to move forward to subsequent course. Email with SPC sent to student and advising